

FBB-XV-9

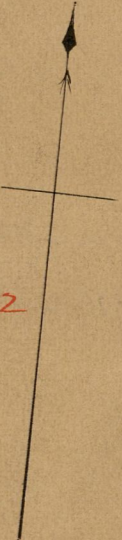
PROVIDENCE, R. I.

CITY ENGINEER'S OFFICE

STREET LINE DEPT.

Mar. 15, 1889

014789



Providence R.I.
This plat accompanies
our report of this date.

PLAT OF DELAHUNT STREET

FROM VEAZIE ST. TO BRANCH AVE.

IN TWO SHEETS.

SCALE 30 FEET PER INCH.

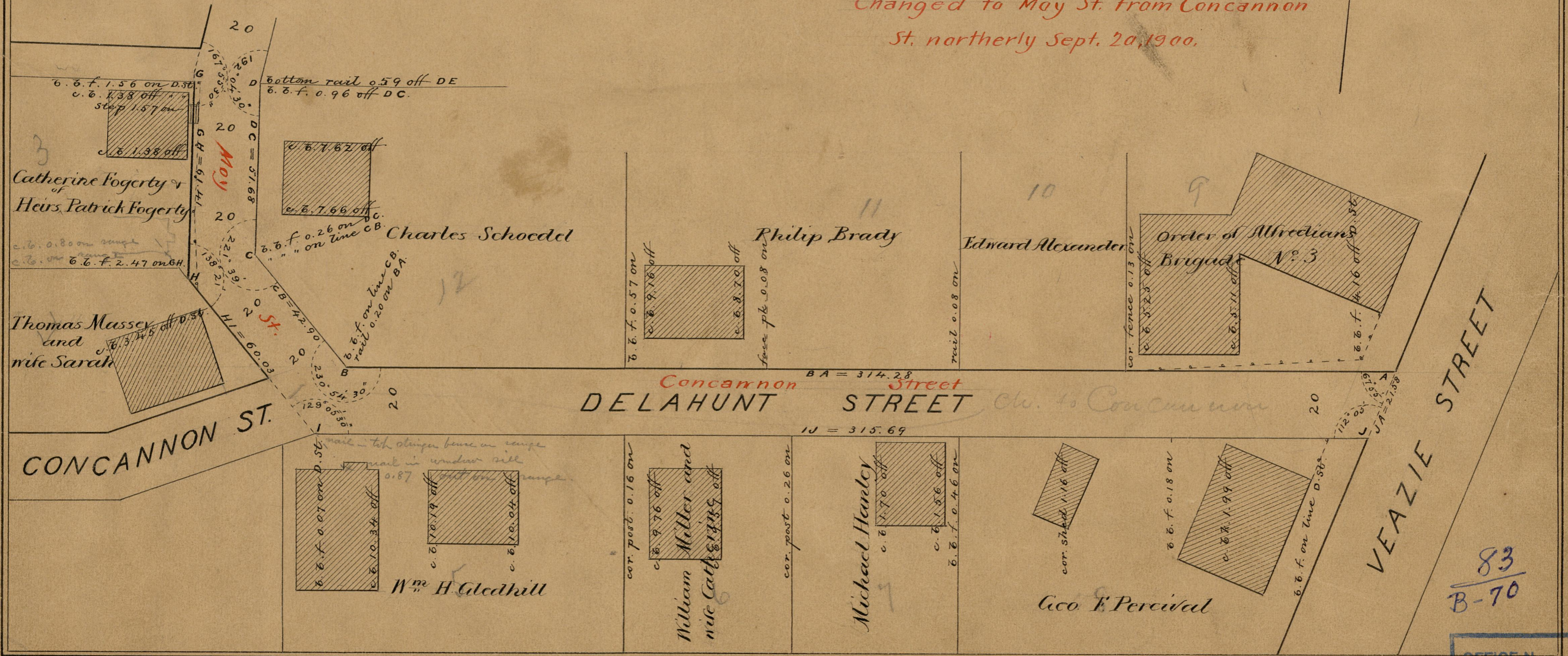
799.84

Changed to Concannon Street

from angle easterly, Dec. 29, 1892

Changed to May St. from Concannon

St. northerly Sept. 20, 1900.



83
B-70

83
B-70

OFFICE No. 9973
DRAWER 53
SHEET B-70